



Unify Management Silos, Eliminate Fingerprinting

APP NOTE

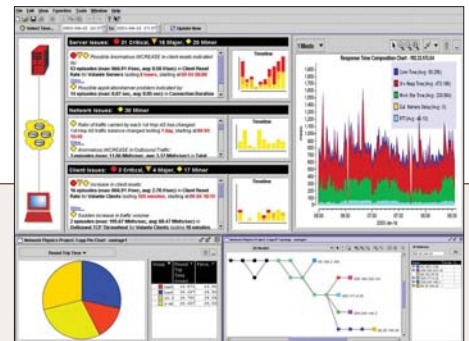
WHAT'S THE REAL SOURCE OF THAT NAGGING NETWORK PERFORMANCE PROBLEM? HOW DO YOU CONVINCING THE SERVER TEAM THAT IT'S NOT THE NETWORK, OR VICE VERSA? HOW MUCH TIME IS WASTED TRYING TO SOLVE PROBLEMS THAT ACTUALLY ORIGINATE IN A DIFFERENT MANAGEMENT SILO? OR TRYING TO CORRELATE DATA FROM WILDLY DIFFERENT MANAGEMENT SYSTEMS? WHAT DOES IT TAKE TO GET EVERYONE ON THE SAME PAGE?

Eliminate the Network Blame Game

With Network Physics, all the data you need to nail down a problem and engage the proper management team is available in one place, from one device. No probes or agents, no RMON-2 or SNMP—just actual traffic, sorted by the business significance you assign. The Network Physics appliance collects and correlates five different metric types formerly available only from disparate management systems—performance, utilization, route quality, BGP/AS, and packet data—to enable you to quickly discern whether an issue originates in server, network, AS/ISP, route, or client.

Faster Troubleshooting, More Cooperation

You won't waste time trying to decide whose responsibility an issue is—you'll know. No more fingerprinting. Instead, the management team responsible can focus right away on the problem using tools specific to the task, leaving everyone else free to concentrate on keeping their part of IS running smoothly. And, since the Network Physics appliance can monitor a variety of metrics that used to require several different systems, you'll spend less on new systems.



Customer Problem:

- > Troubleshooting is too hard; nagging problems burn IT cycles
- > Fingerprinting between management teams
- > Hard to correlate data from multiple management silos to get end-to-end business-relevant view of performance

Network Physics Solution:

- > End-to-end, business relevant view of performance from actual traffic
- > Collect and correlate performance, utilization, route quality, BGP/AS, and packet data with one device

Customer Benefits:

- > Quickly identify problem source: server, network, AS/ISP, route, or client
- > Eliminate fingerprinting, get the right team on the job right away
- > Promote cross-team collaboration
- > Reduce network management expenses



NetworkPhysics

491 Fairchild Drive, Mountain View, CA 94043 USA 1.650.230.0900 (main) 1.650.230.0909 (fax)
info@networkphysics.com www.networkphysics.com